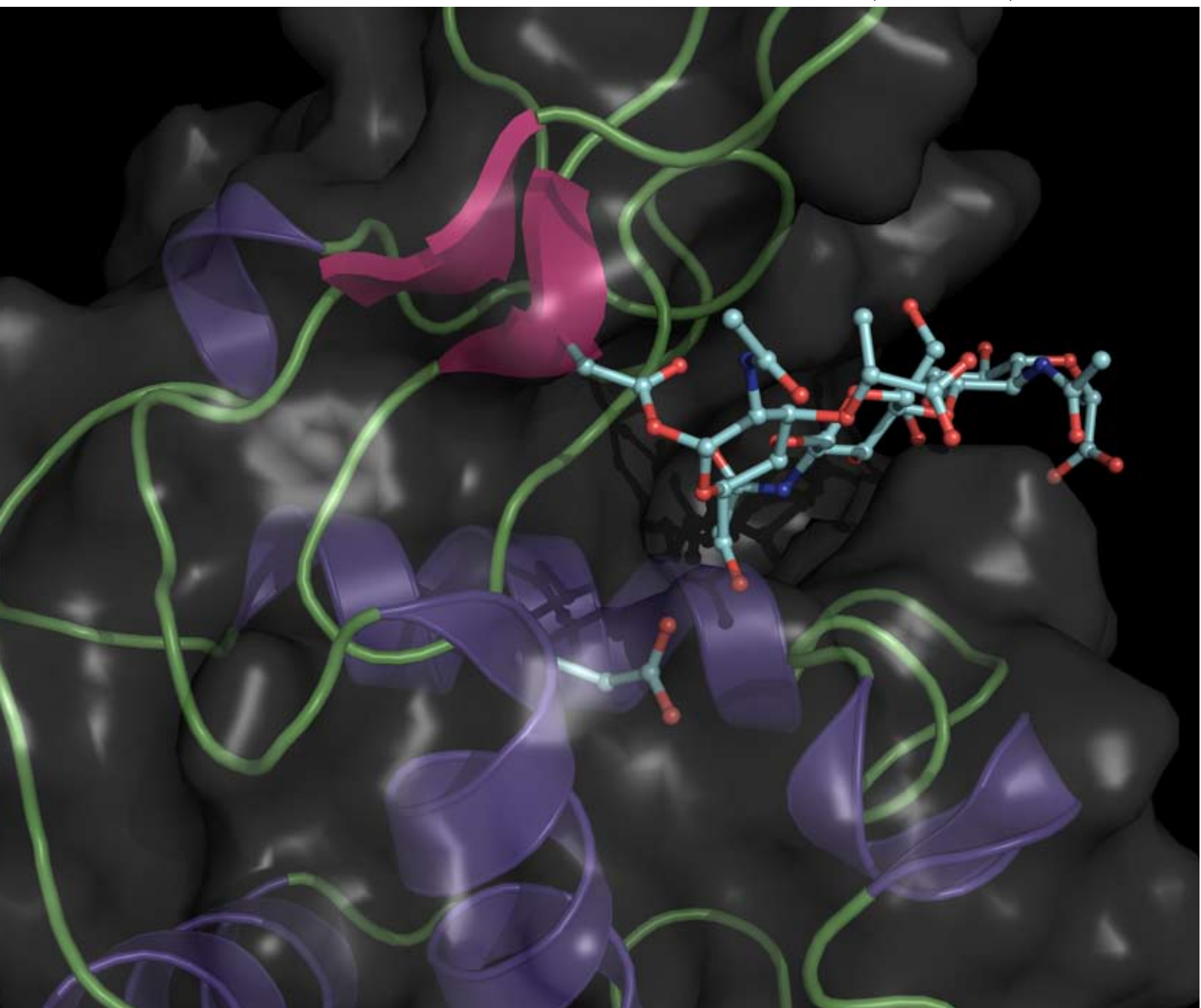


ChemComm

Chemical Communications

www.rsc.org/chemcomm

Number 37 | 7 October 2008 | Pages 4369–4508



ISSN 1359-7345

COMMUNICATION

Adrian J. Mulholland *et al.*
QM/MM simulations predict a covalent intermediate in the hen egg white lysozyme reaction with its natural substrate

FEATURE ARTICLE

Sabine L. Flitsch *et al.*
Glycoarrays—tools for determining protein–carbohydrate interactions and glycoenzyme specificity

RSC Publishing